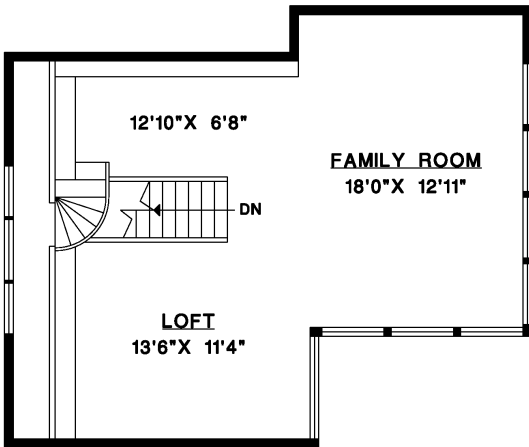


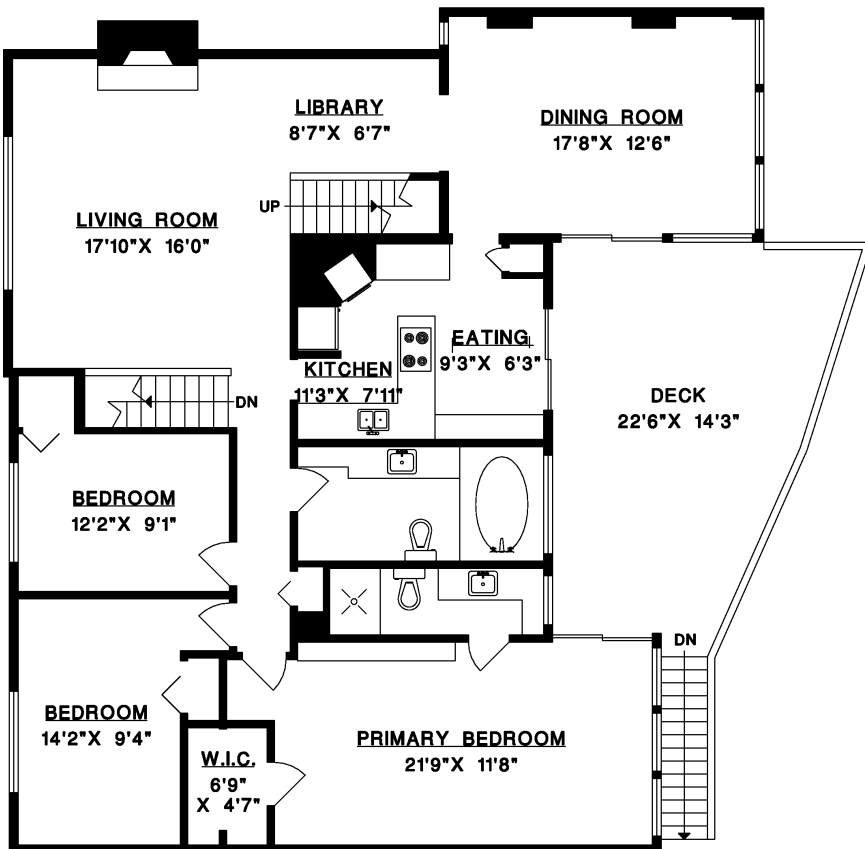


655 BALLANTREE ROAD, WEST VANCOUVER

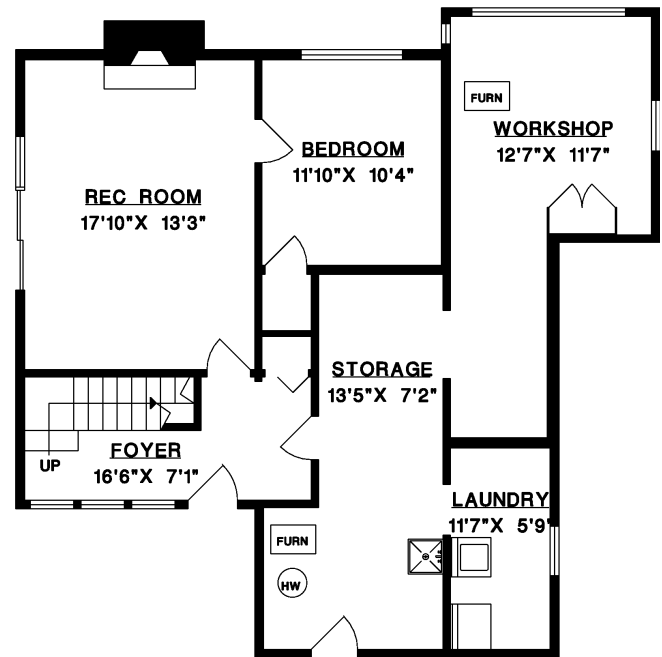
MAIN FLOOR	1,711 SQ.FT.
UPPER FLOOR	650 SQ.FT.
LOWER FLOOR	1,071 SQ.FT.
LIVABLE	3,432 SQ.FT.
DECK	333 SQ.FT.



UPPER FLOOR



MAIN FLOOR



LOWER FLOOR

