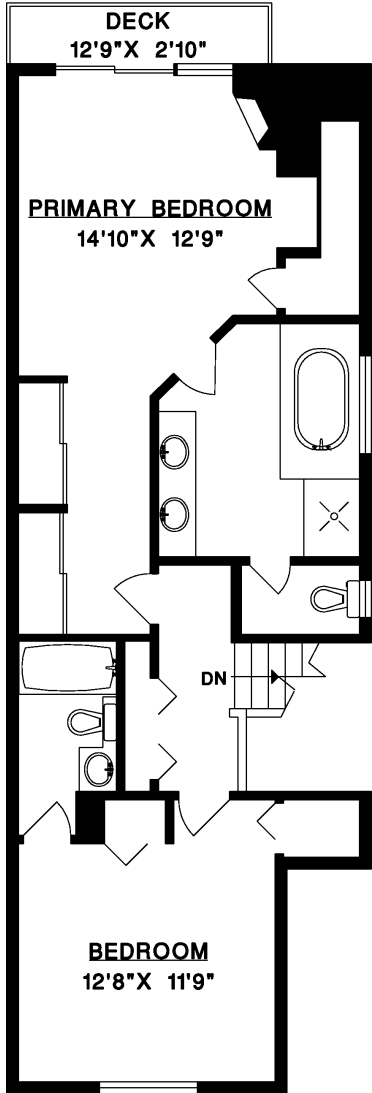
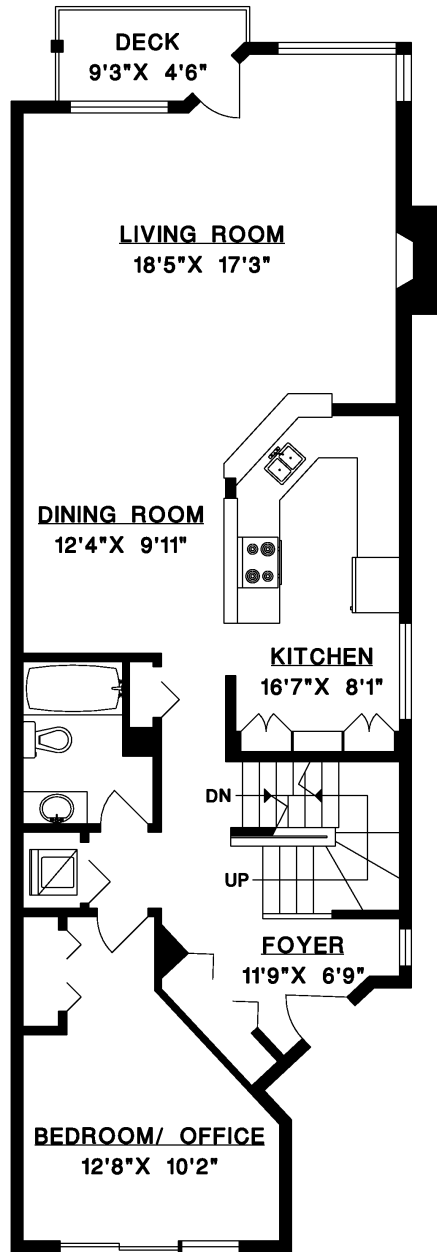




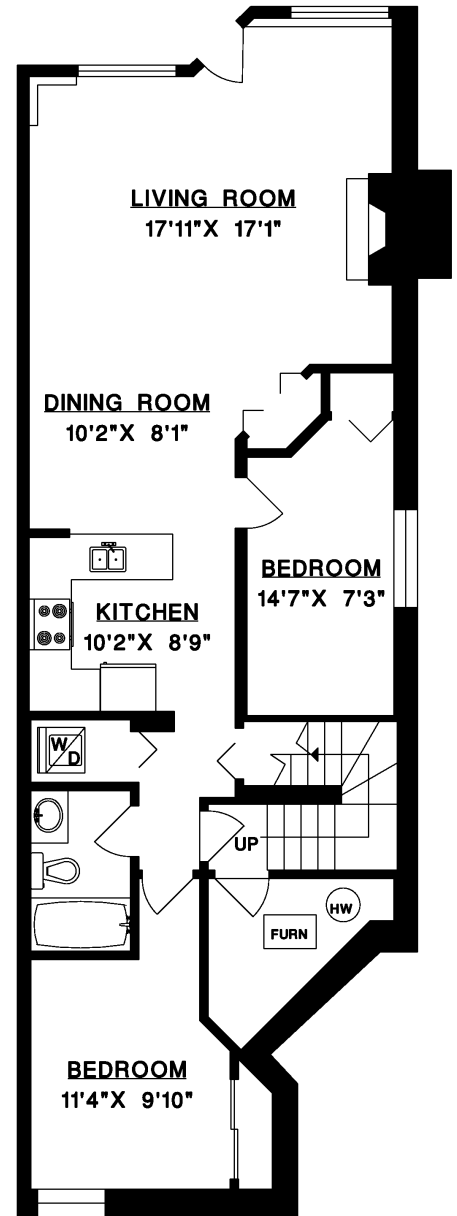
1207 MARINE DRIVE, WEST VANCOUVER



UPPER FLOOR



MAIN FLOOR



LOWER FLOOR

MAIN FLOOR	1,080 SQ.FT.
UPPER FLOOR	834 SQ.FT.
LOWER FLOOR	1,080 SQ.FT.
LIVABLE	2,994 SQ.FT.
GARAGE	414 SQ.FT.
DECKS	80 SQ.FT.

