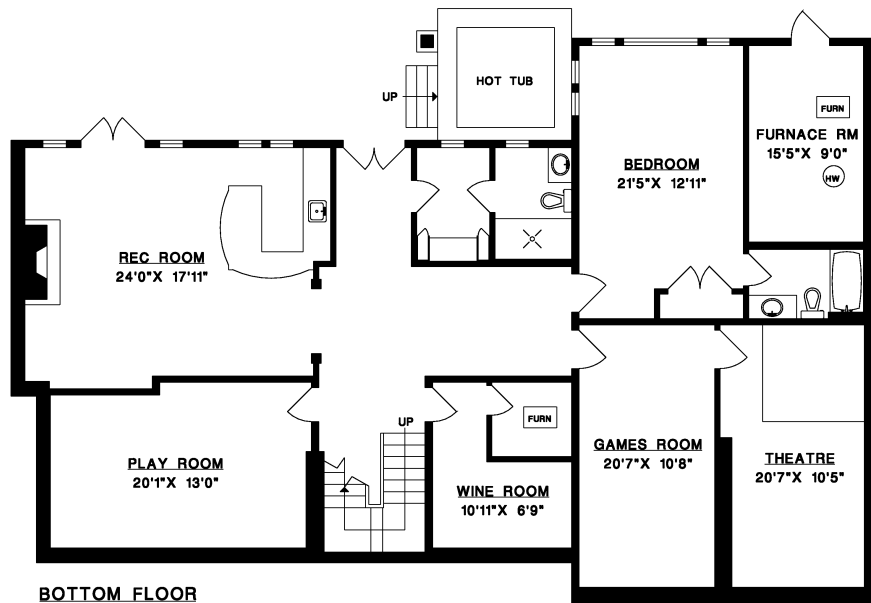
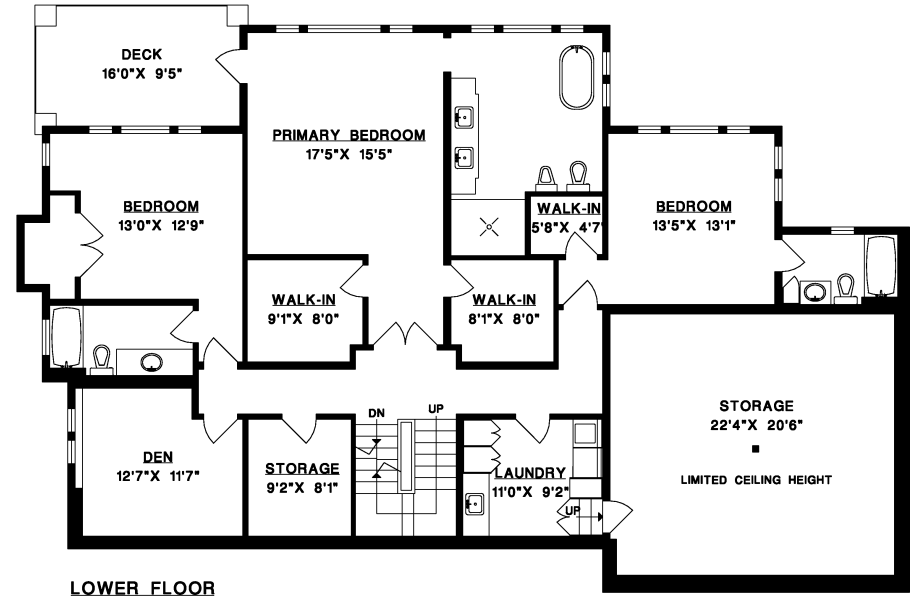
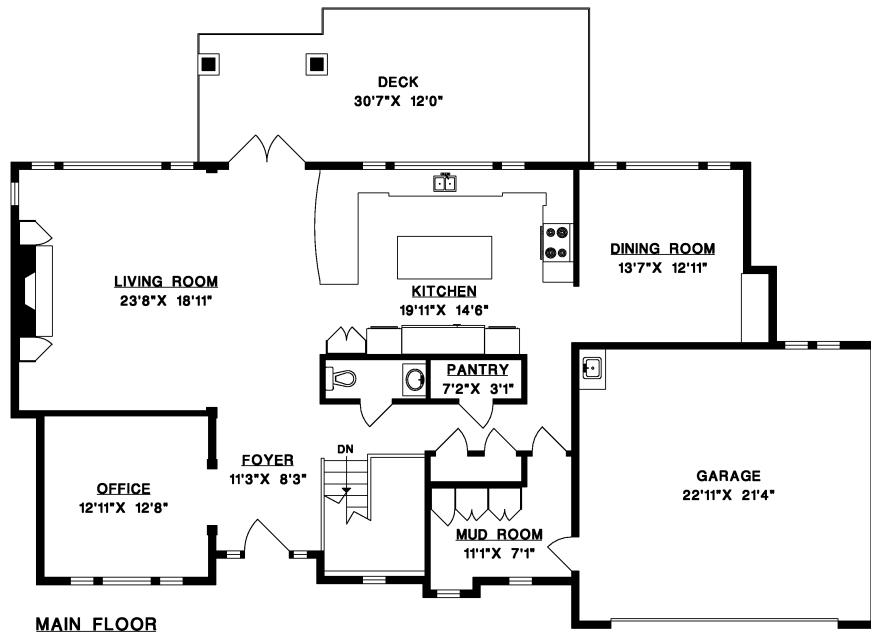




2761 WILLOUGHBY ROAD, WEST VANCOUVER



MAIN FLOOR	1,651 SQ.FT.
LOWER FLOOR	1,963 SQ.FT.
BOTTOM FLOOR	2,345 SQ.FT.
LIVABLE	5,959 SQ.FT.
GARAGE	522 SQ.FT.
STORAGE	515 SQ.FT.
FURNACE ROOM	163 SQ.FT.
DECKS	616 SQ.FT.