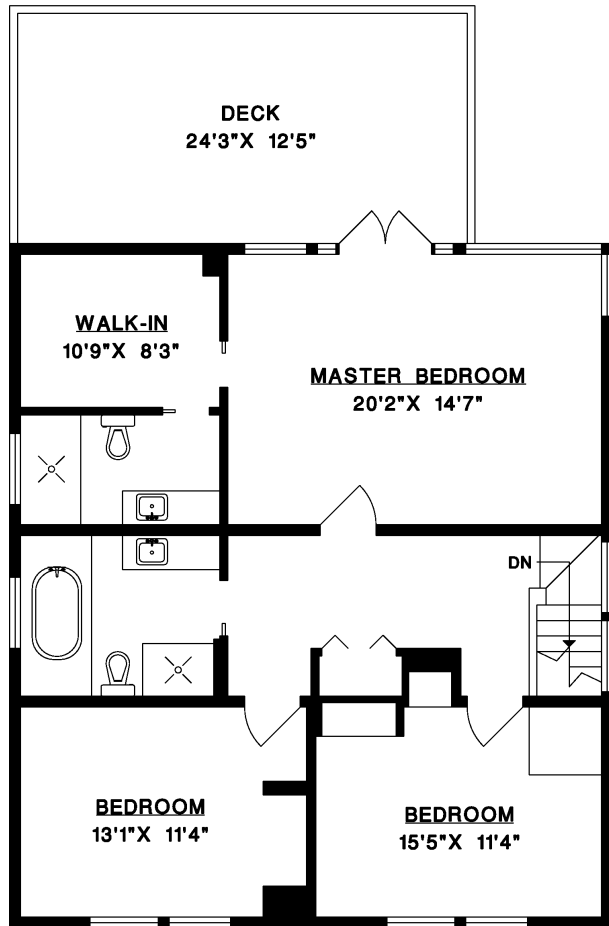


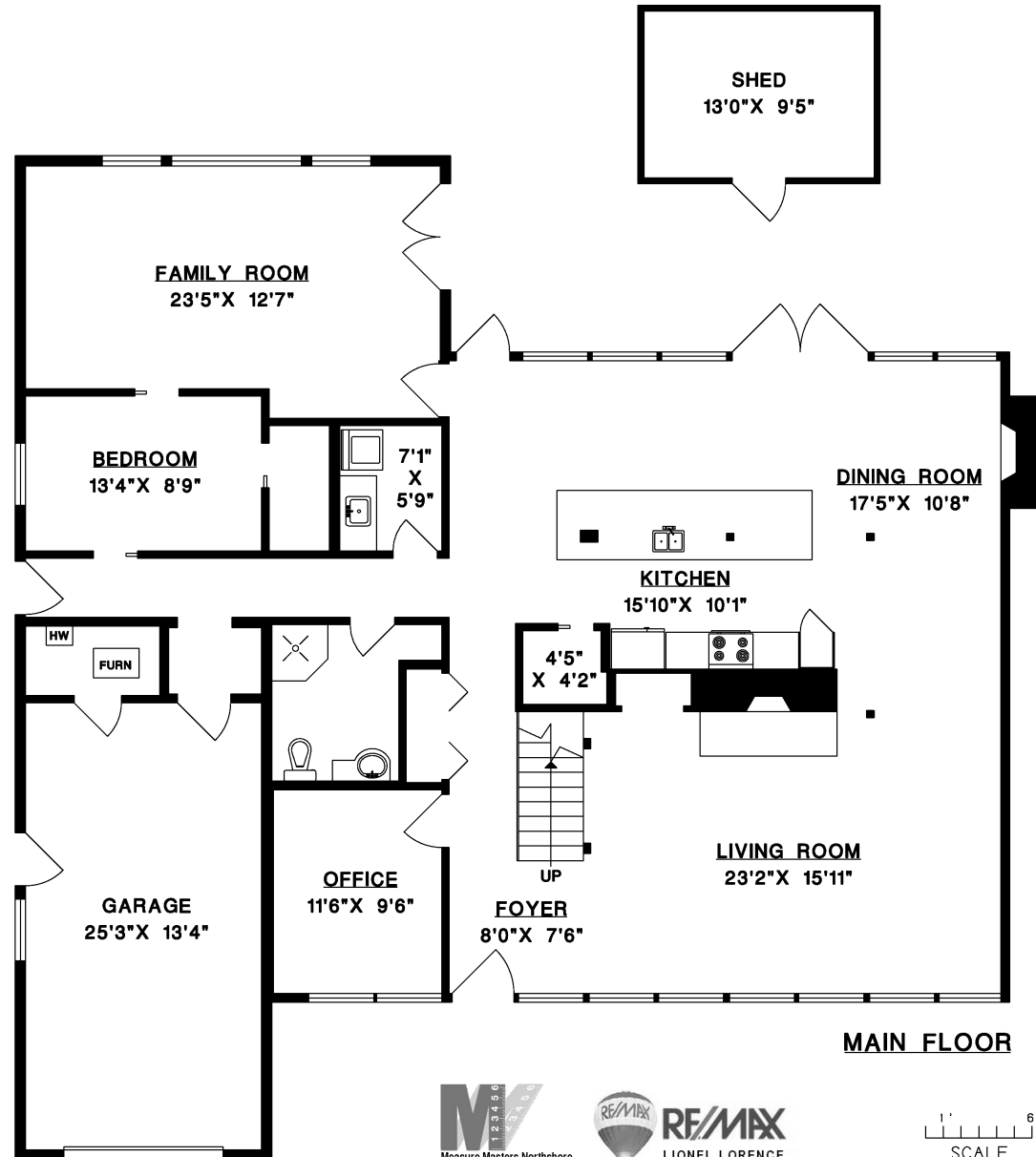


971 BEAUMONT DRIVE, NORTH VANCOUVER

MAIN FLOOR	2,066 SQ.FT.
UPPER FLOOR	1,200 SQ.FT.
LIVABLE	3,266 SQ.FT.
GARAGE	401 SQ.FT.
DECK	322 SQ.FT.
SHED	138 SQ.FT.



UPPER FLOOR



MAIN FLOOR