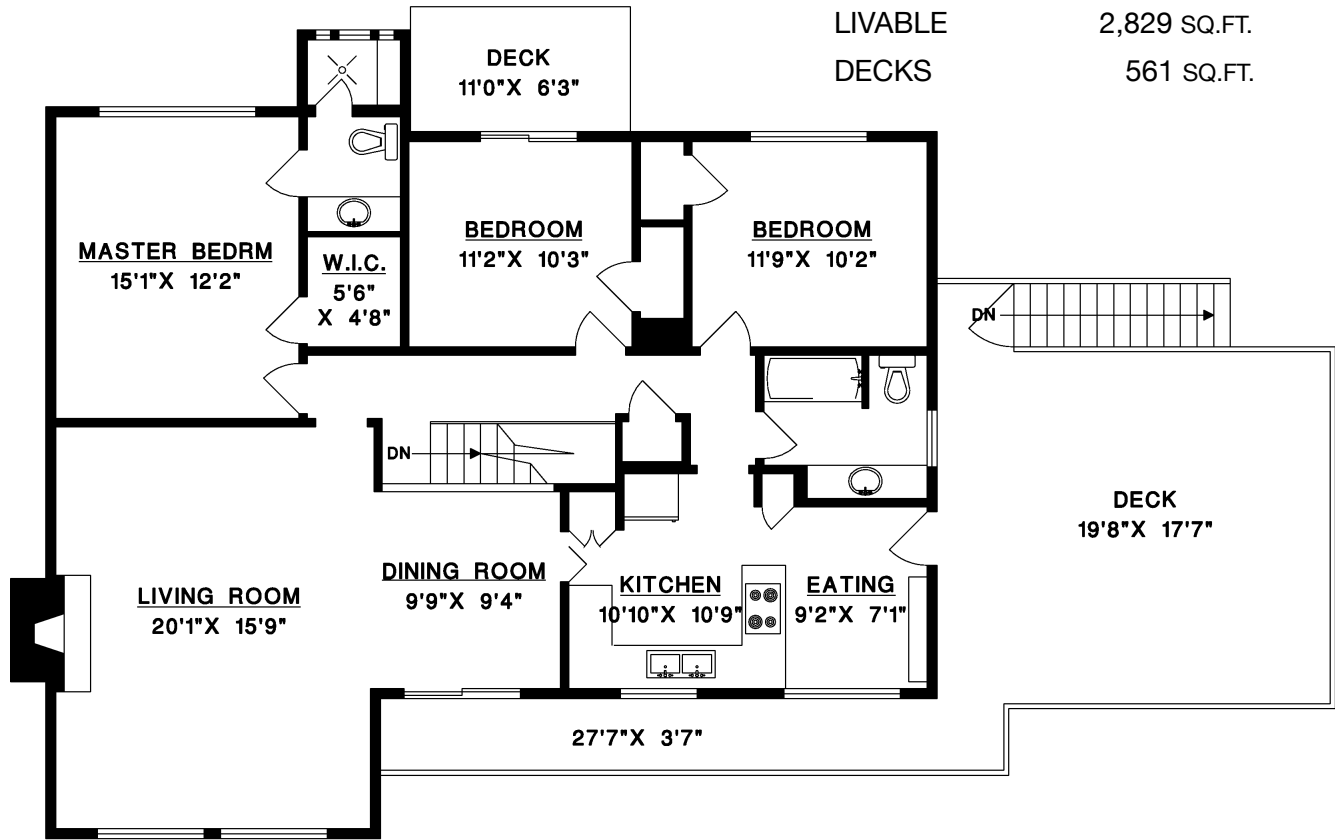


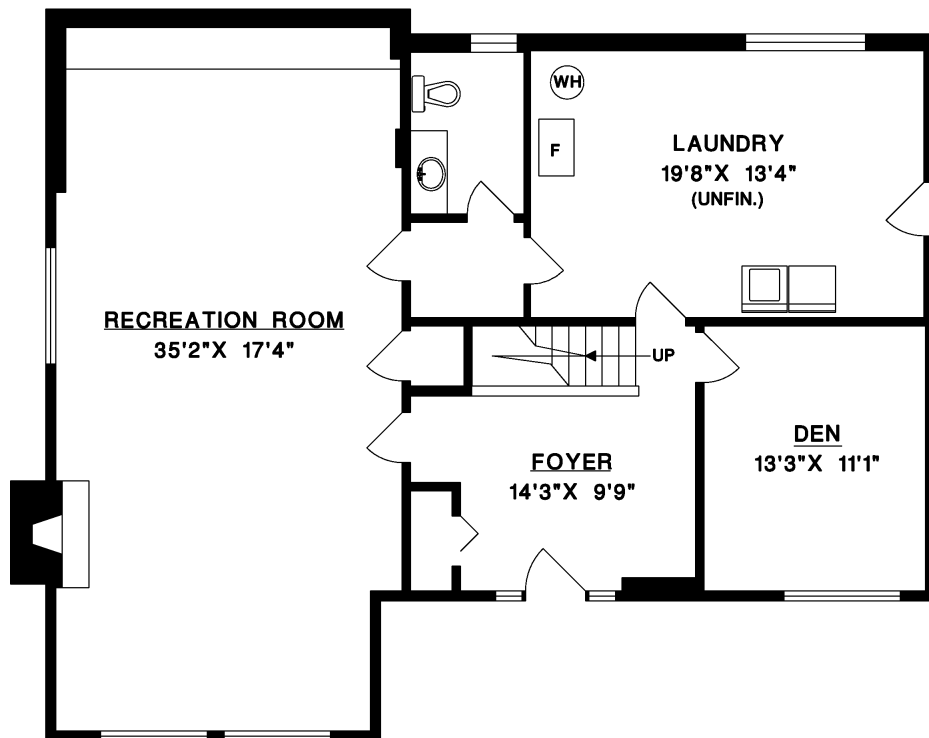


526 BALLANTREE PLACE, WEST VANCOUVER

MAIN FLOOR 1,425 SQ.FT.  
 LOWER FLOOR 1,404 SQ.FT.  
 LIVABLE 2,829 SQ.FT.  
 DECKS 561 SQ.FT.



MAIN FLOOR



LOWER FLOOR

