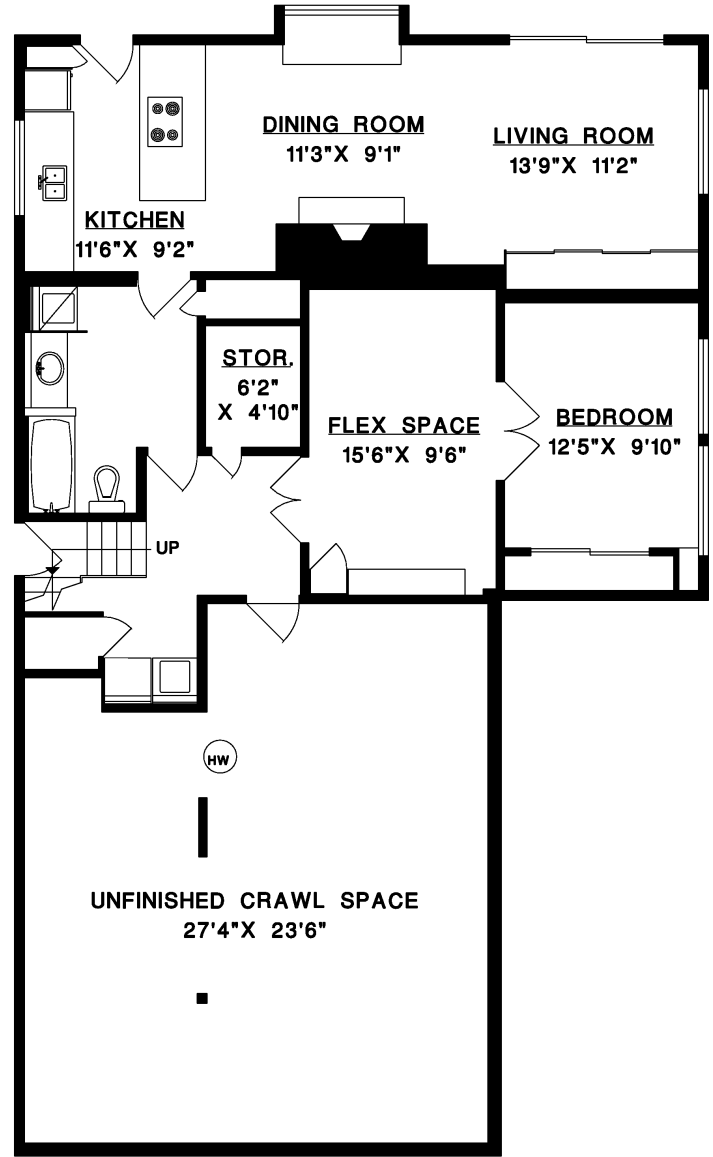
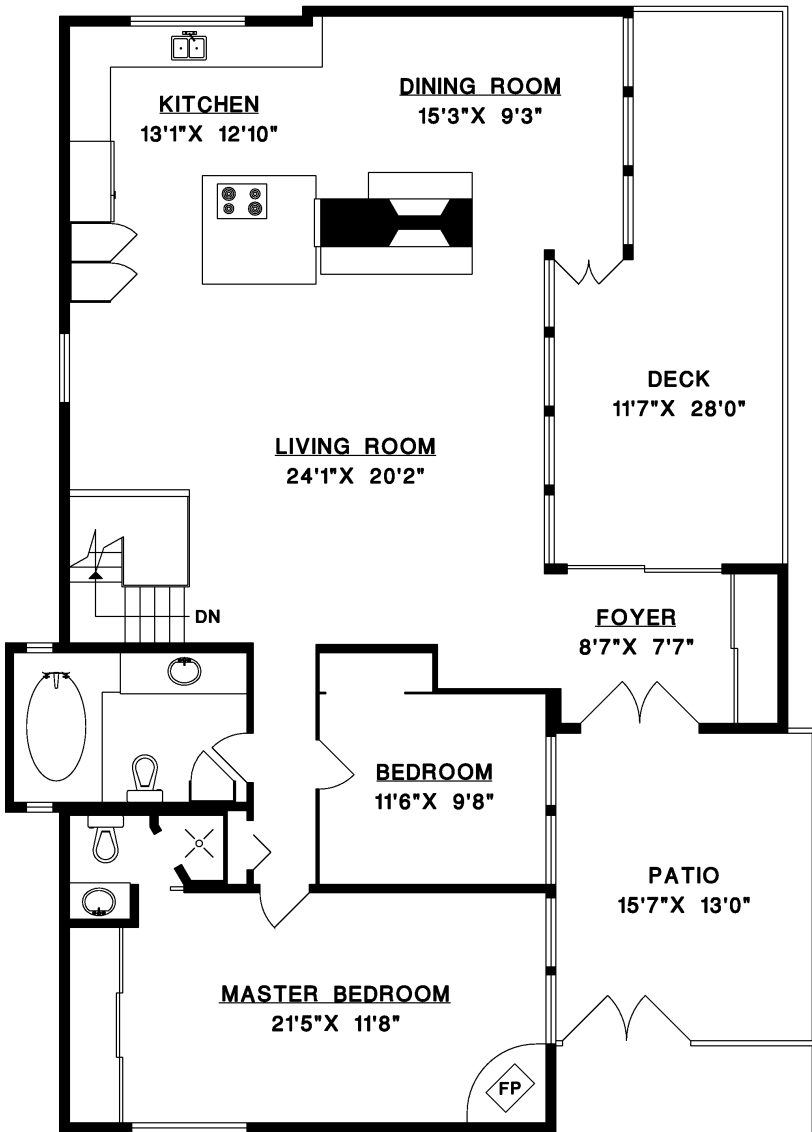




5408 GREENTREE ROAD, WEST VANCOUVER

MAIN FLOOR	1,605 SQ.FT.
LOWER FLOOR	1,069 SQ.FT.
LIVABLE	2,674 SQ.FT.
UNFINISHED	645 SQ.FT.
DECK	283 SQ.FT.
PATIO	269 SQ.FT.



MAIN FLOOR

LOWER FLOOR

