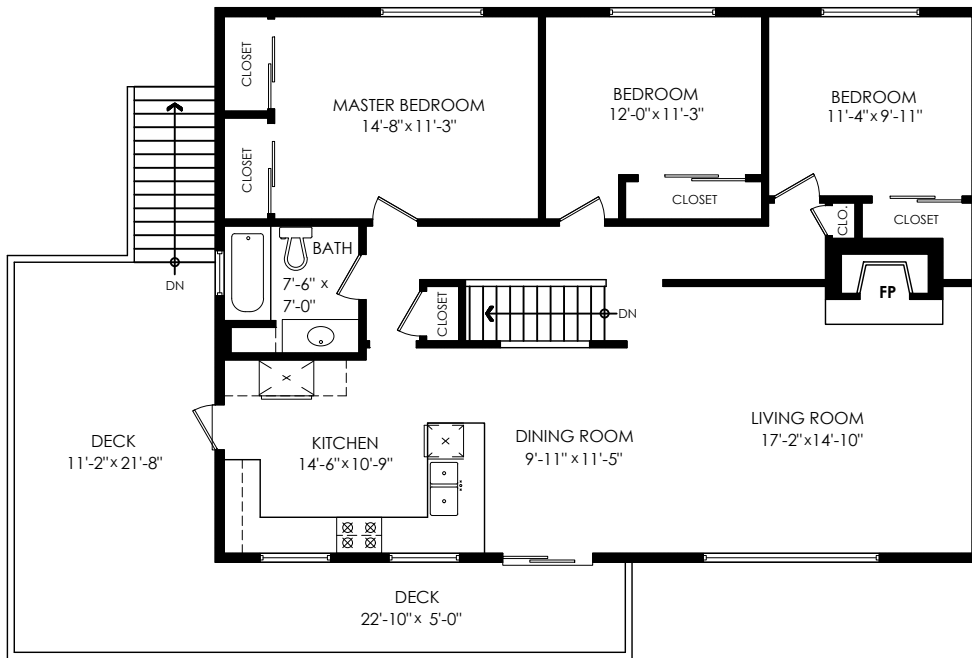


# 1730 Kilkenny Rd, North Vancouver

Main Floor: 1,311 sq.ft.  
 Lower Floor: 1,145 sq.ft.  
**Total Livable: 2,456 sq.ft.**

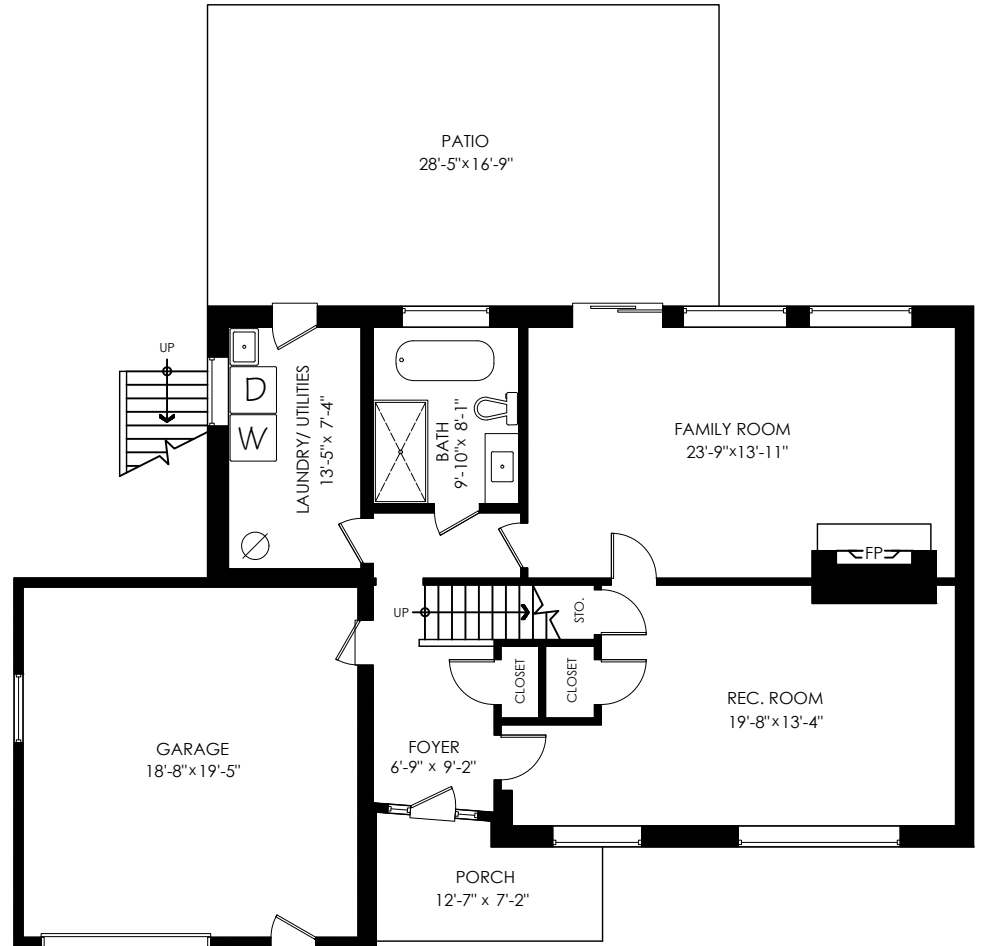
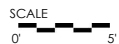
Garage: 394 sq.ft.  
**Grand Total: 2,850 sq.ft.**

Patio: 476 sq.ft.  
 Deck: 356 sq.ft.  
 Porch: 77 sq.ft.  
**Total Extras: 909 sq.ft.**



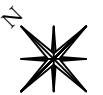
**Main Floor Plan**

Floor Area: 1311 sq.ft.  
 Ceiling Height: 8'



**Lower Floor Plan**

Floor Area: 1145 sq.ft.  
 Ceiling Height: 8'-1"



**MEASURED ON: (2021-08-13)**

Measuring, Scanning, & Design | 604-329-5788



E&O Insured. Total square foot calculated to gross unit area. SQFT based on interior measurements to exterior walls, not taken from original blueprints, may include unfinished area. This is for marketing purposes only and is not intended for architectural/construction use. All details, sizes & placements should be considered approximate within +/- 2% tolerance. [www.PixiWorks.com](http://www.PixiWorks.com)