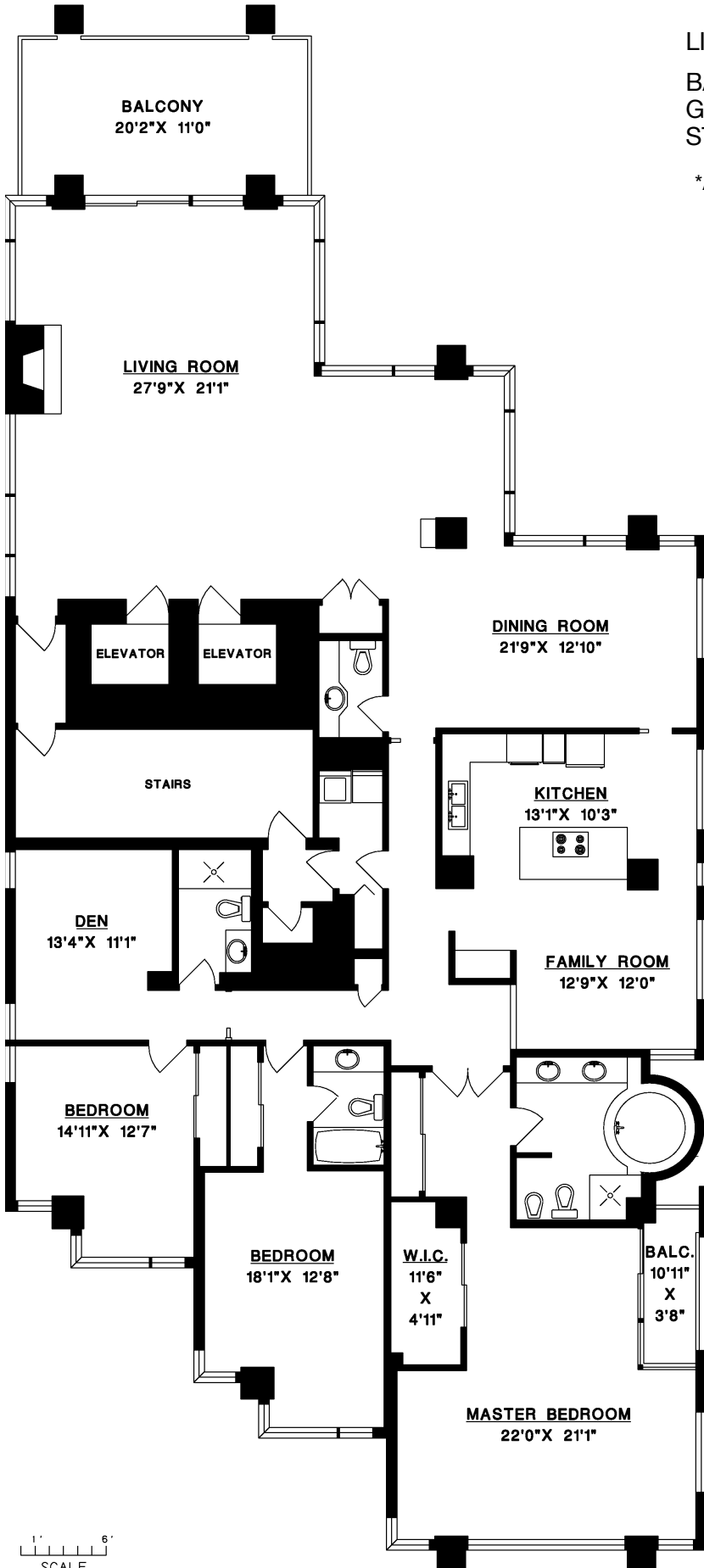




#11 - 2250 BELLEVUE AVENUE, WEST VANCOUVER



| | |
|-----------|----------------|
| LIVABLE | 3,286 SQ.FT. * |
| BALCONIES | 274 SQ.FT. |
| GARAGE | 458 SQ.FT. |
| STORAGE | 95 SQ.FT. |

*AS PER STRATA PLAN

