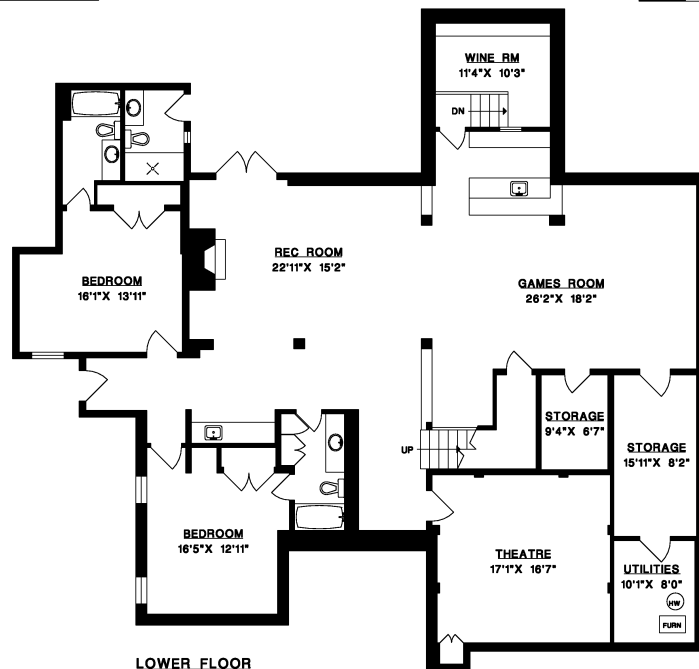
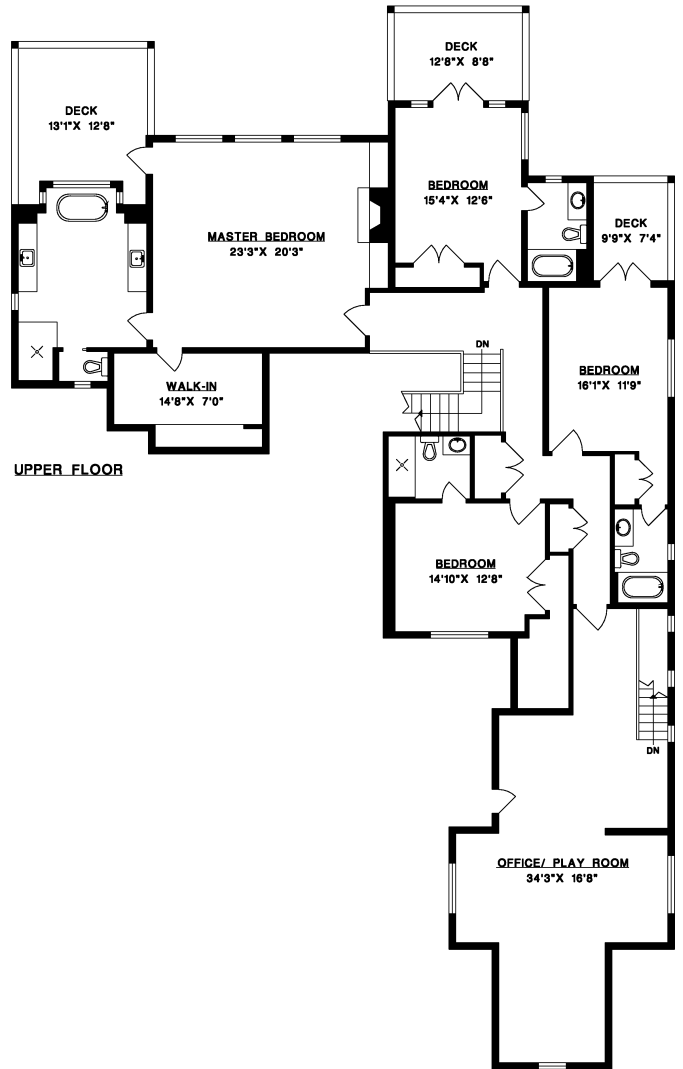
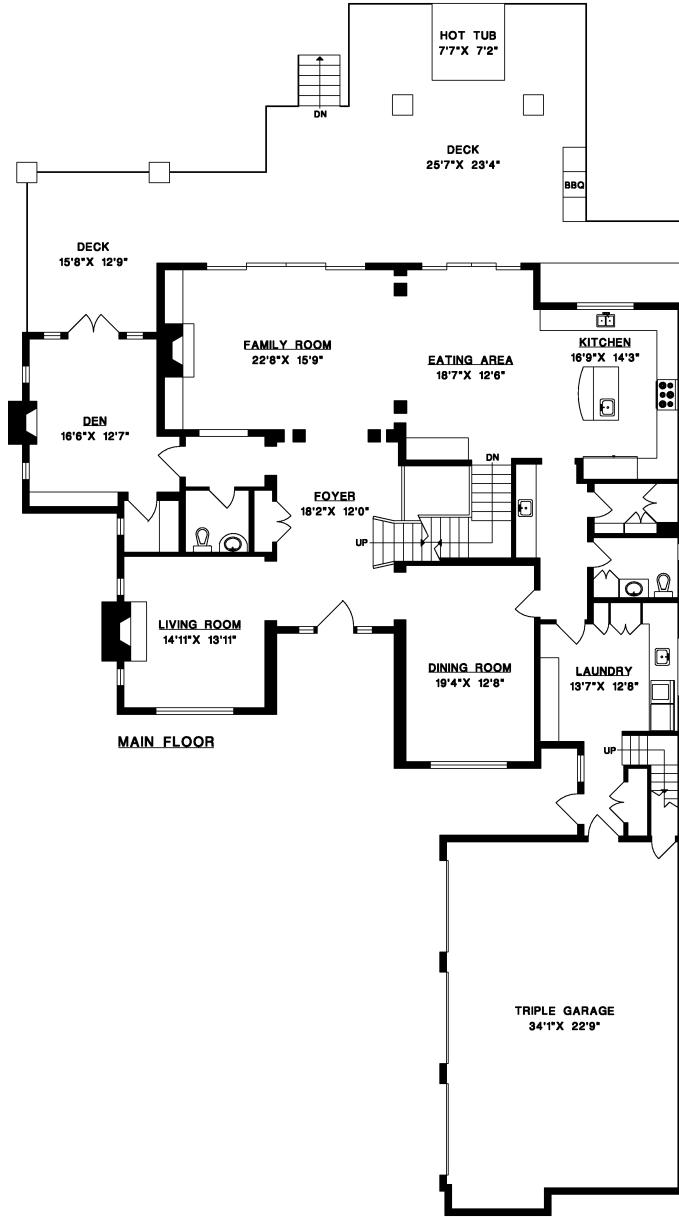




2638 QUEENS AVENUE, WEST VANCOUVER



MAIN FLOOR	2,706 SQ.FT.
UPPER FLOOR	2,923 SQ.FT.
LOWER FLOOR	3,067 SQ.FT.
LIVABLE	8,696 SQ.FT.
GARAGE	871 SQ.FT.
DECKS	1,538 SQ.FT.

