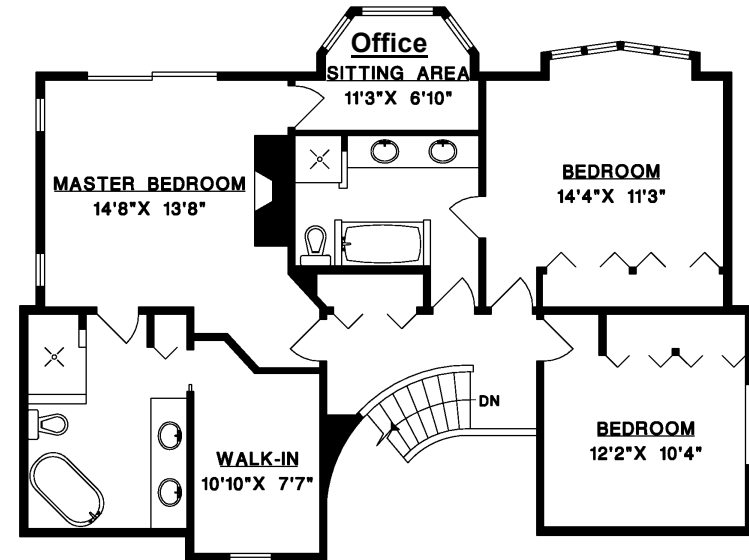
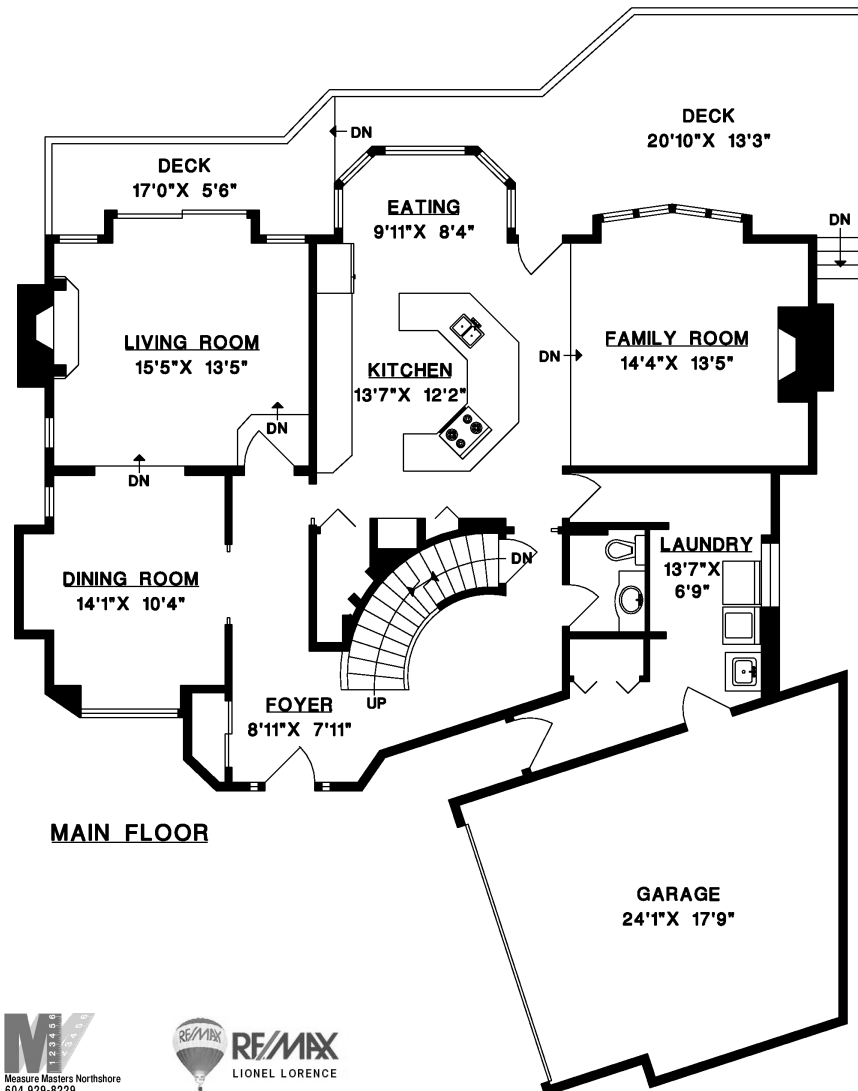


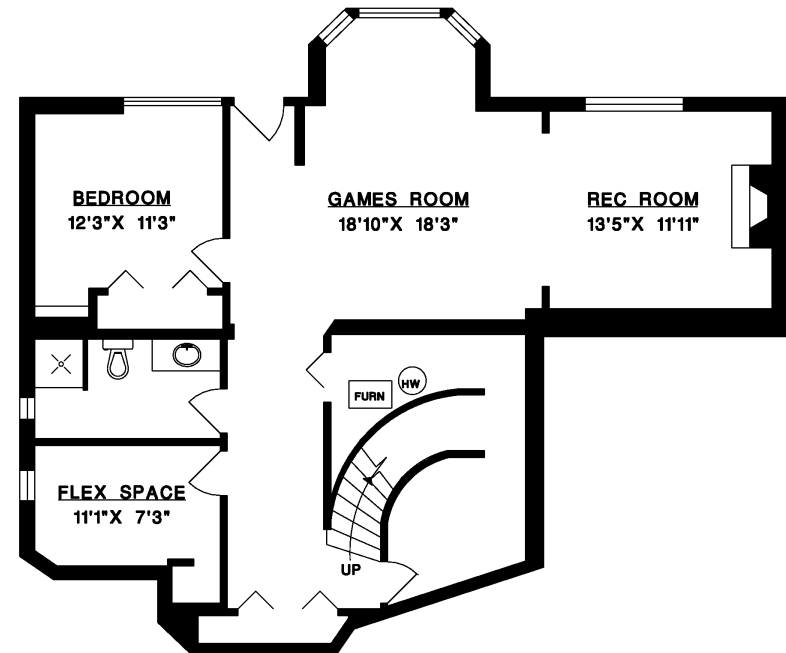


1247 COLEMAN STREET, NORTH VANCOUVER

MAIN FLOOR	1,497 SQ.FT.
UPPER FLOOR	1,192 SQ.FT.
LOWER FLOOR	1,249 SQ.FT.
LIVABLE	3,938 SQ.FT.
GARAGE	428 SQ.FT.
DECK	392 SQ.FT.



UPPER FLOOR



LOWER FLOOR

