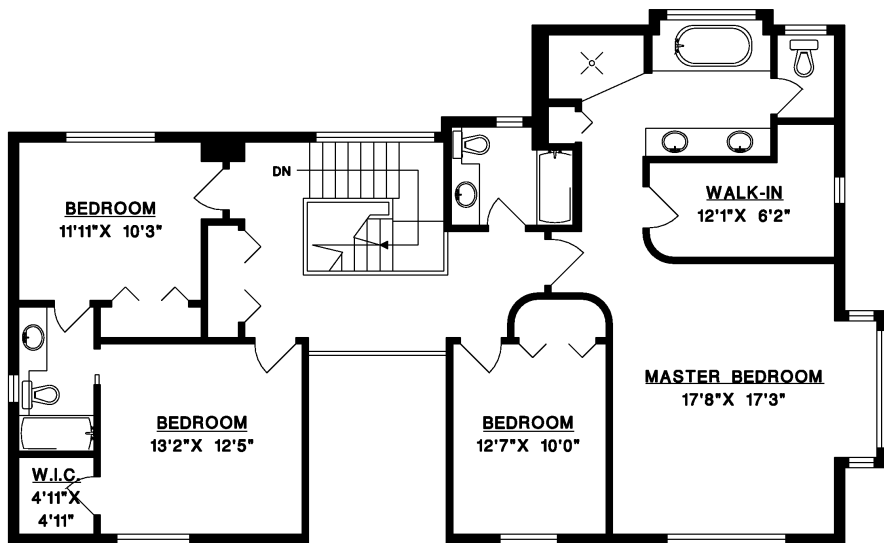
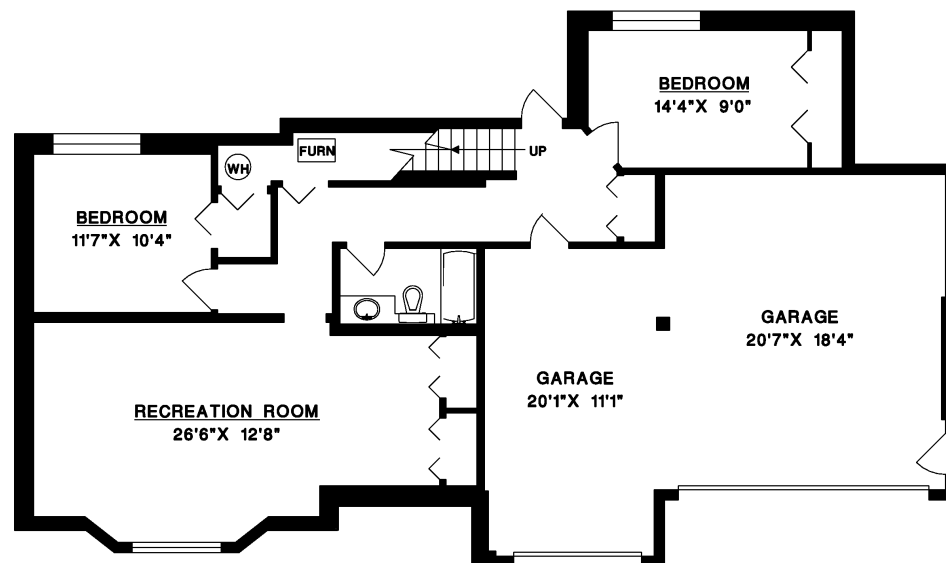
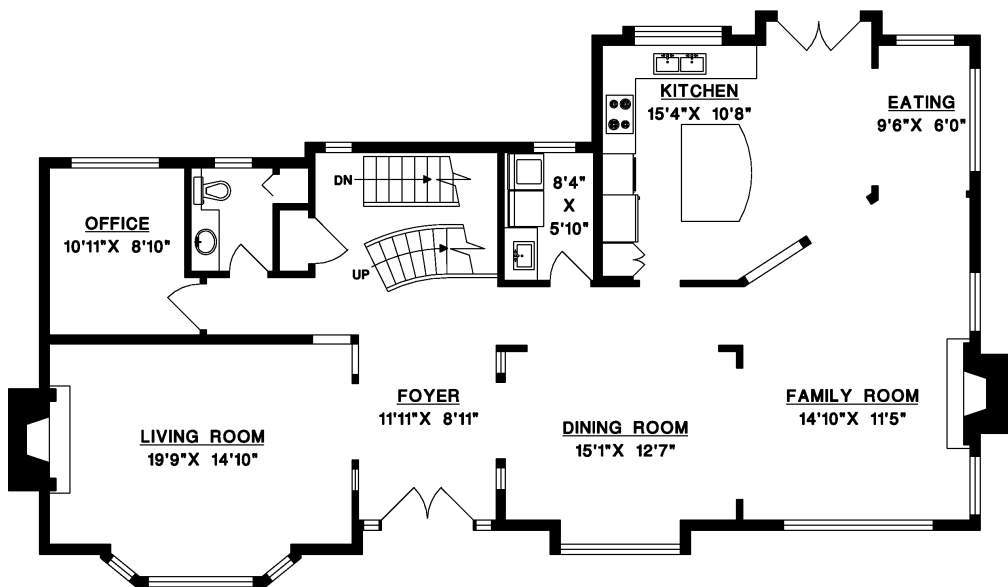




2905 TOWER HILL CRESCENT, WEST VANCOUVER



MAIN FLOOR	1,801 SQ.FT.
UPPER FLOOR	1,544 SQ.FT.
LOWER FLOOR	1,084 SQ.FT.
LIVABLE	4,429 SQ.FT.
GARAGE	656 SQ.FT.



MAIN FLOOR

LOWER FLOOR

