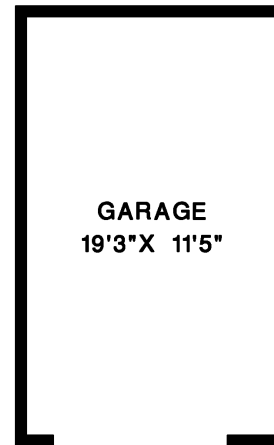
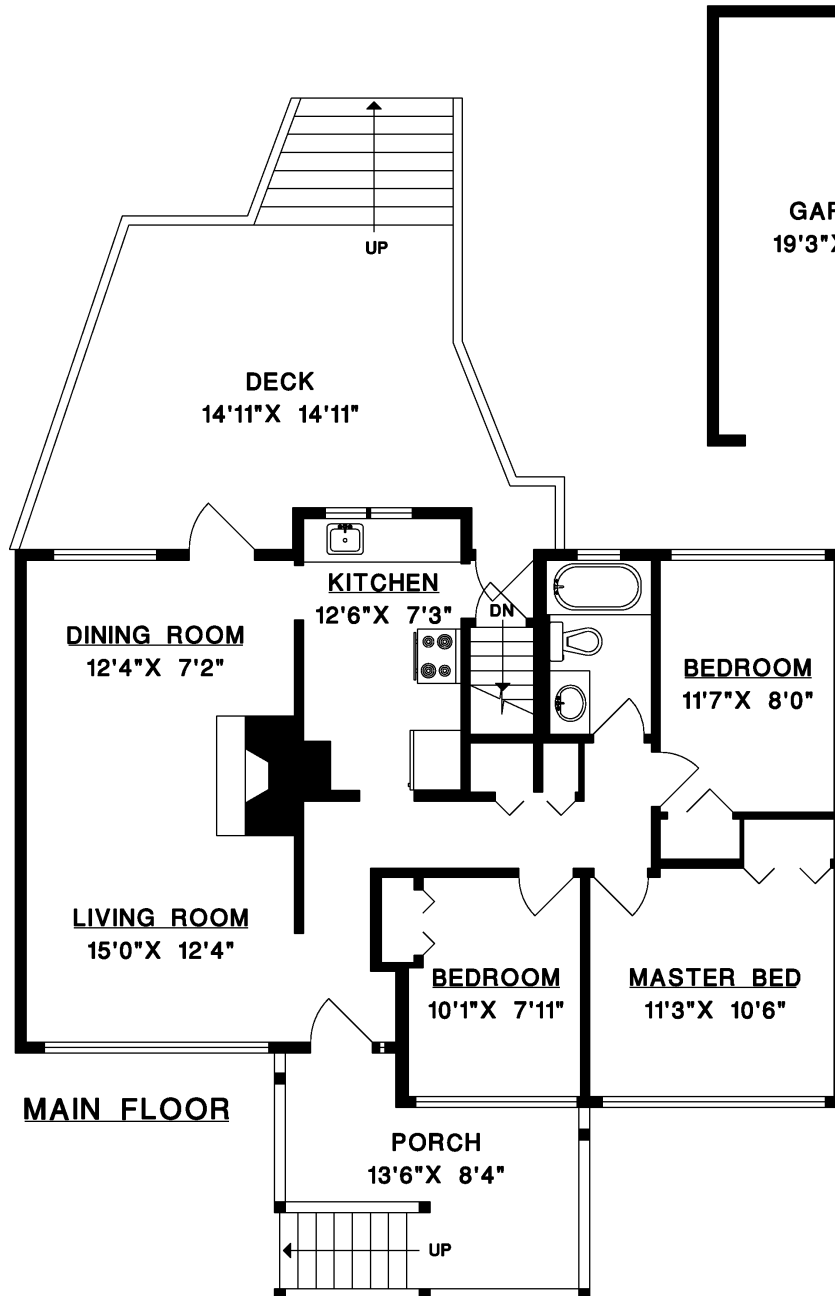




1226 BRANTWOOD ROAD, NORTH VANCOUVER



MAIN FLOOR	952 SQ.FT.
LOWER FLOOR	954 SQ.FT.
LIVABLE	1,906 SQ.FT.
GARAGE	252 SQ.FT.
PORCH	118 SQ.FT.
DECK	287 SQ.FT.

