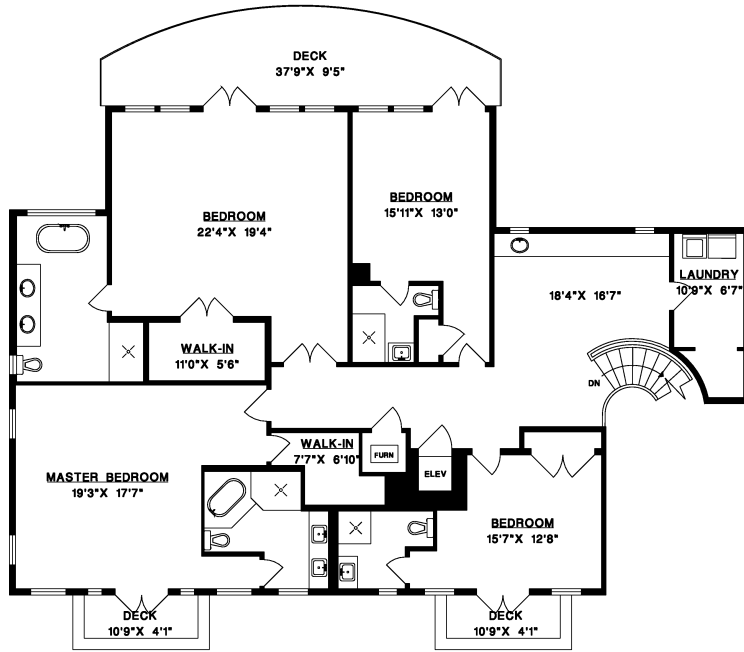
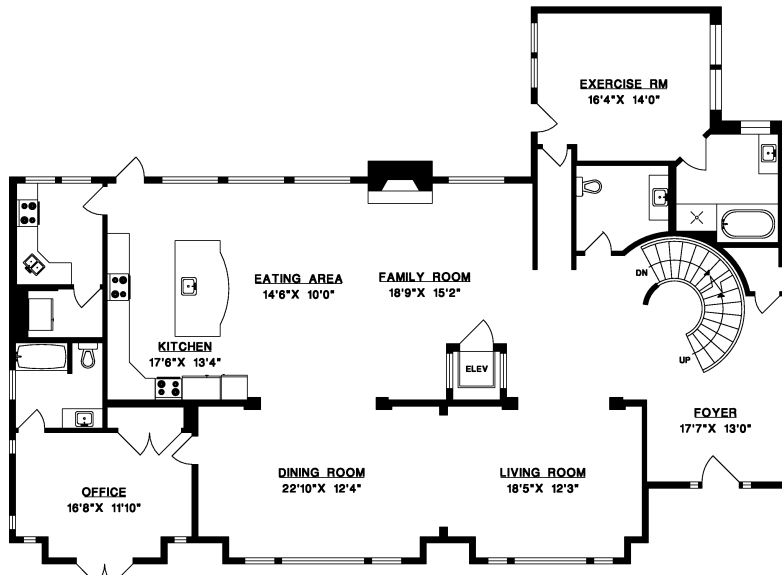




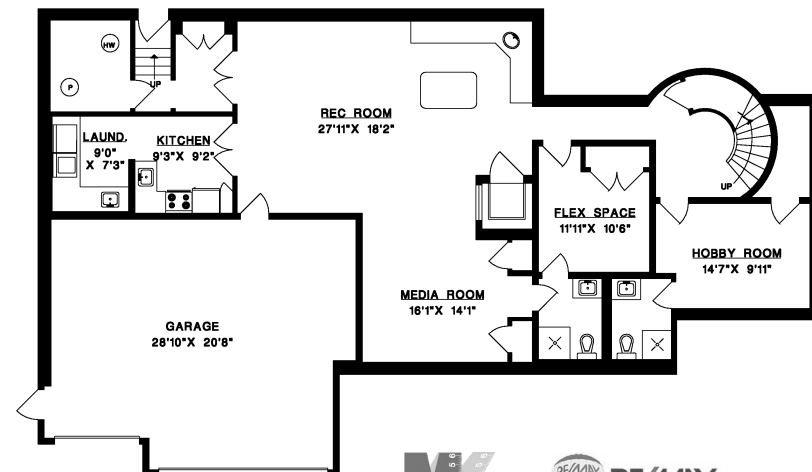
1141 MILLSTREAM ROAD, WEST VANCOUVER



UPPER FLOOR



MAIN FLOOR



LOWER FLOOR

MAIN FLOOR	2,901 SQ.FT.
UPPER FLOOR	2,627 SQ.FT.
LOWER FLOOR	1,850 SQ.FT.
LIVABLE	7,378 SQ.FT.
GARAGE	685 SQ.FT.
DECKS	431 SQ.FT.