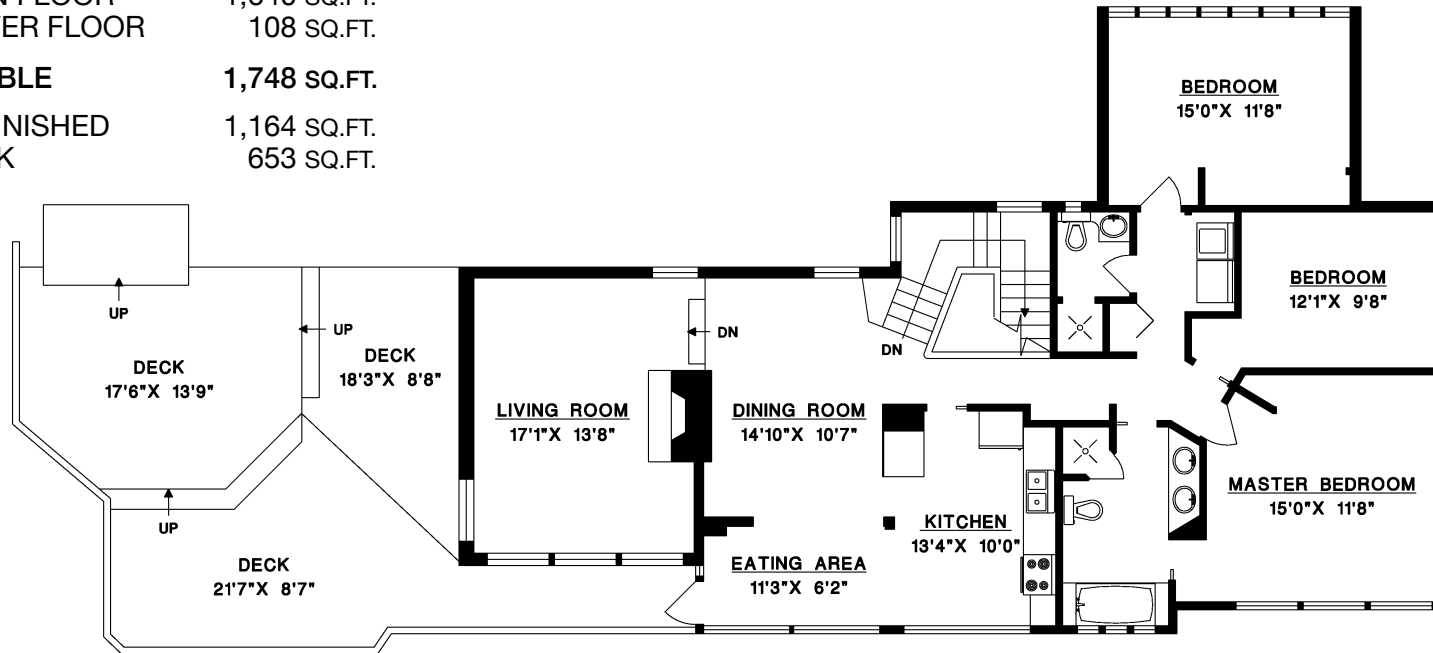


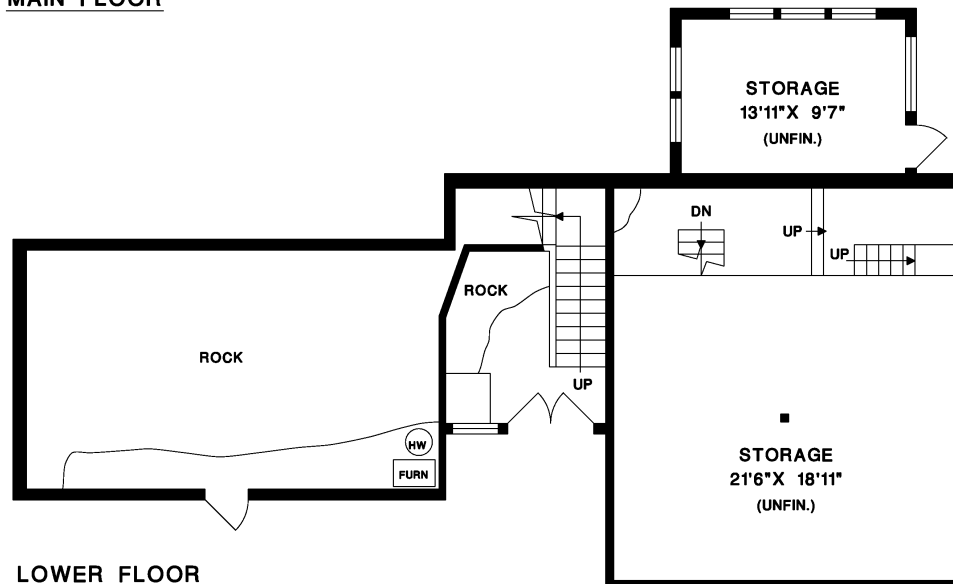


3809 MARINE DRIVE, WEST VANCOUVER

MAIN FLOOR 1,640 SQ.FT.
 LOWER FLOOR 108 SQ.FT.
 LIVABLE 1,748 SQ.FT.
 UNFINISHED DECK 1,164 SQ.FT.
 DECK 653 SQ.FT.



MAIN FLOOR



LOWER FLOOR



FILE: 1148-199
 DATE: DEC/09