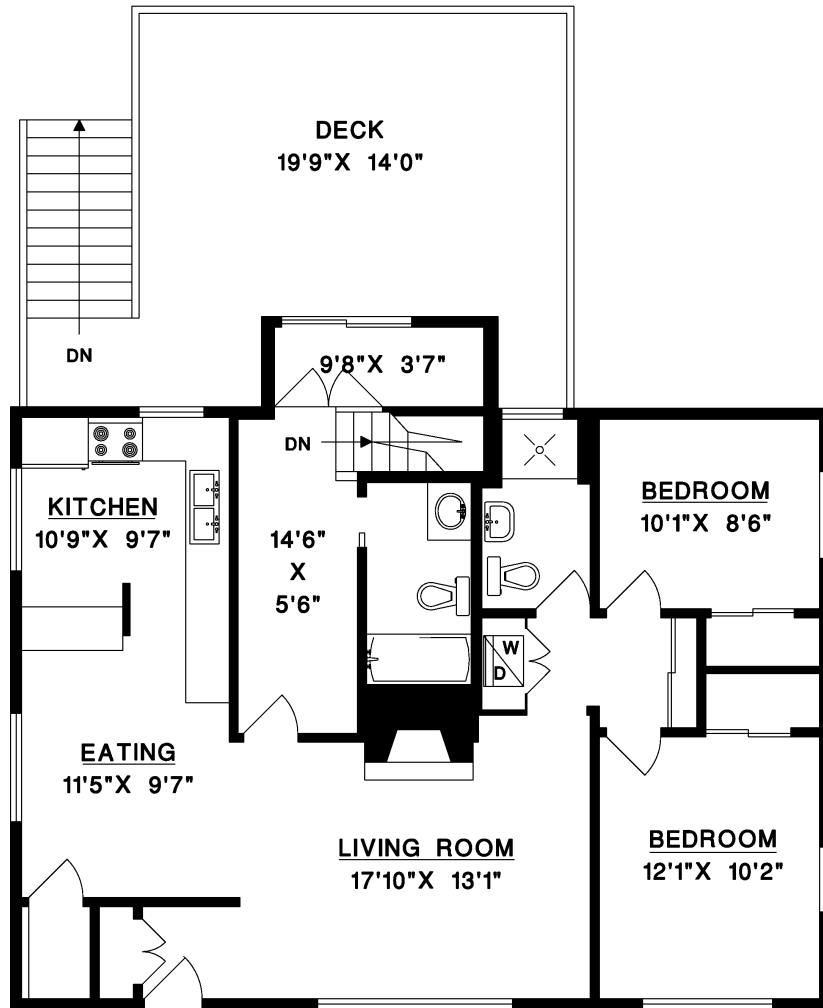


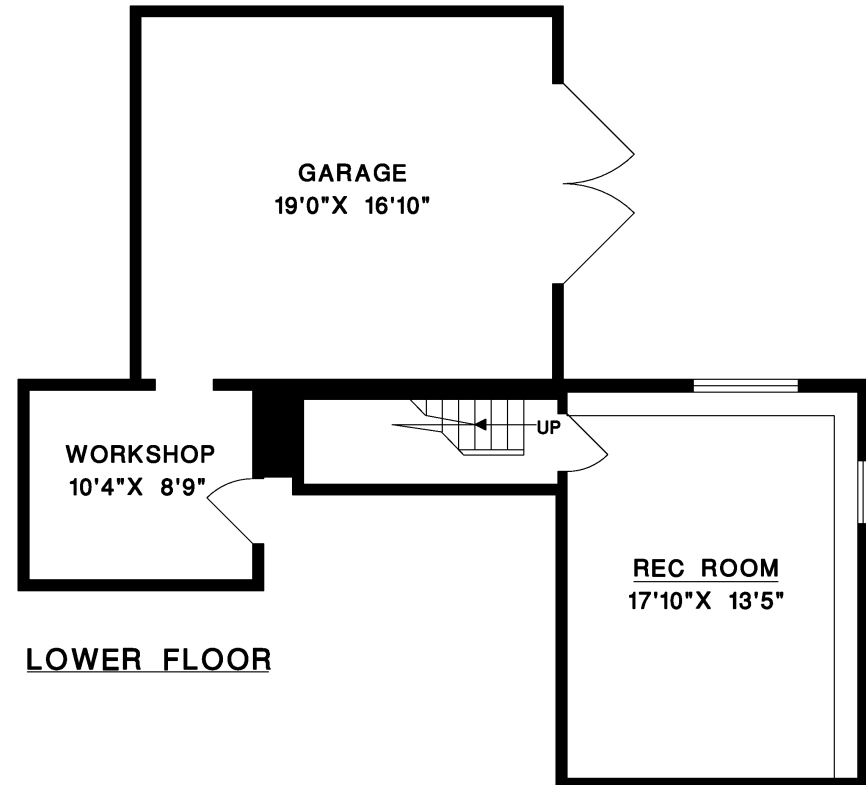


1804 FELL AVENUE, NORTH VANCOUVER

MAIN FLOOR	1,098 SQ.FT.
LOWER FLOOR	344 SQ.FT.
LIVABLE	1,442 SQ.FT.
GARAGE	345 SQ.FT.
WORKSHOP	111 SQ.FT.



MAIN FLOOR



LOWER FLOOR

