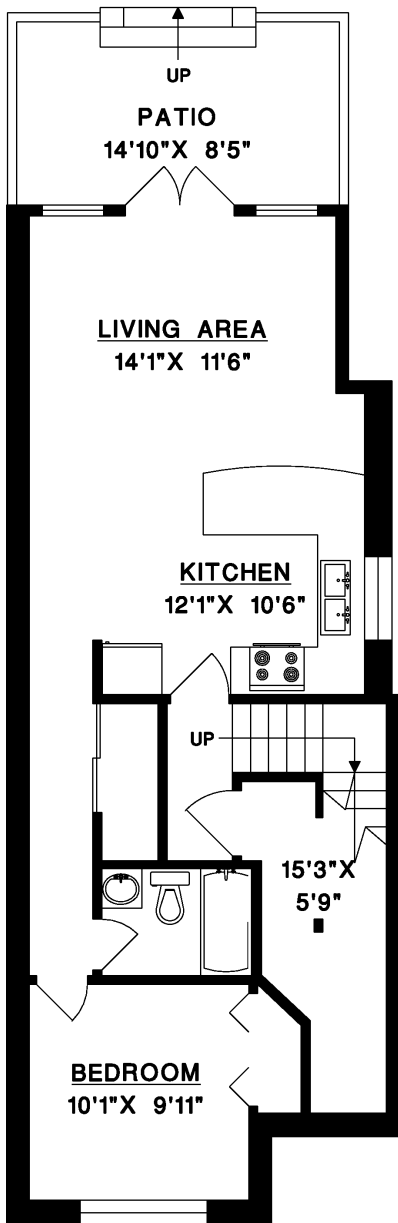
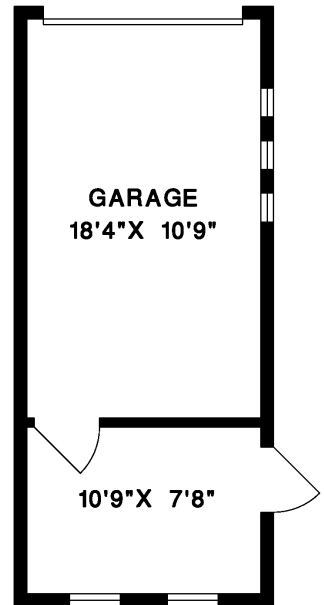


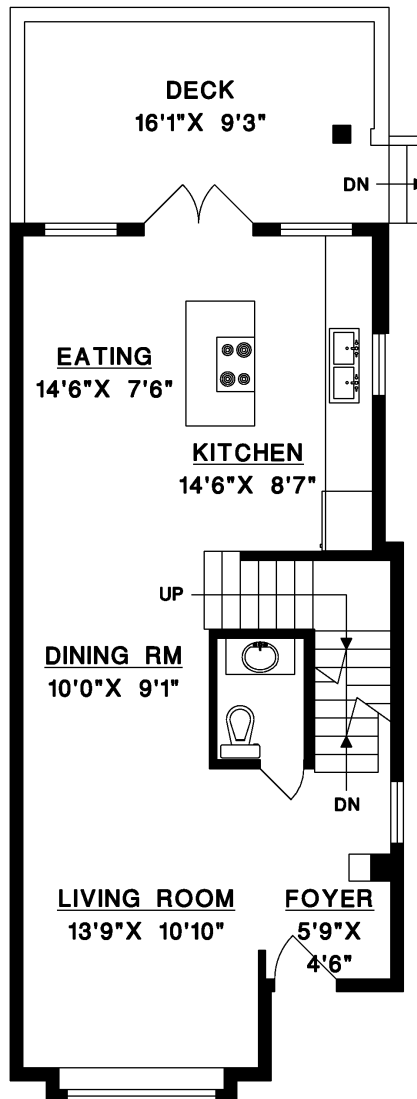


2376 MARINE DRIVE, WEST VANCOUVER

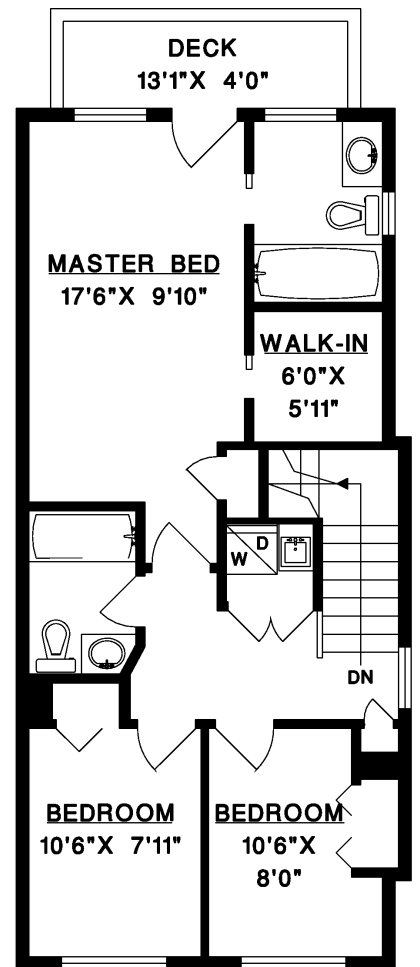
MAIN FLOOR	685 SQ.FT.
UPPER FLOOR	705 SQ.FT.
LOWER FLOOR	800 SQ.FT.
LIVABLE	2,190 SQ.FT.
GARAGE	329 SQ.FT.
DECKS	239 SQ.FT.
PATIO	139 SQ.FT.



LOWER FLOOR



MAIN FLOOR



UPPER FLOOR



RE/MAX
LIONEL LORENCE

