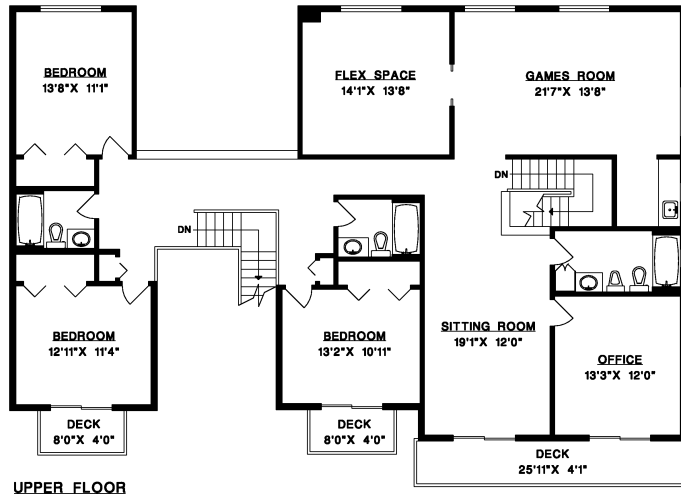




241 BAYVIEW ROAD, LIONS BAY



MAIN FLOOR 3,283 SQ.FT.  
 UPPER FLOOR 2,199 SQ.FT.  
 LOWER FLOOR 1,363 SQ.FT.

LIVABLE 6,845 SQ.FT.  
 GARAGE 927 SQ.FT.  
 WORKSHOP 446 SQ.FT.  
 DECKS 1,564 SQ.FT.

