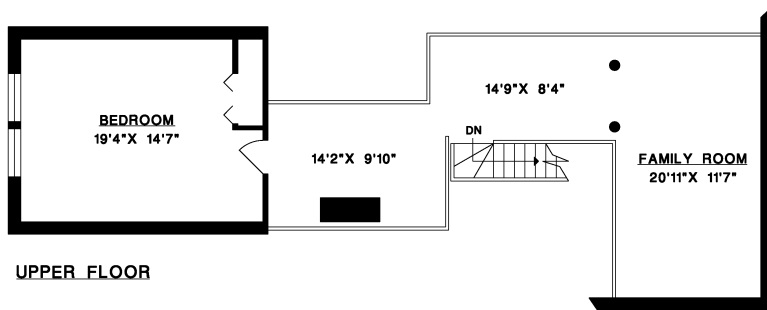




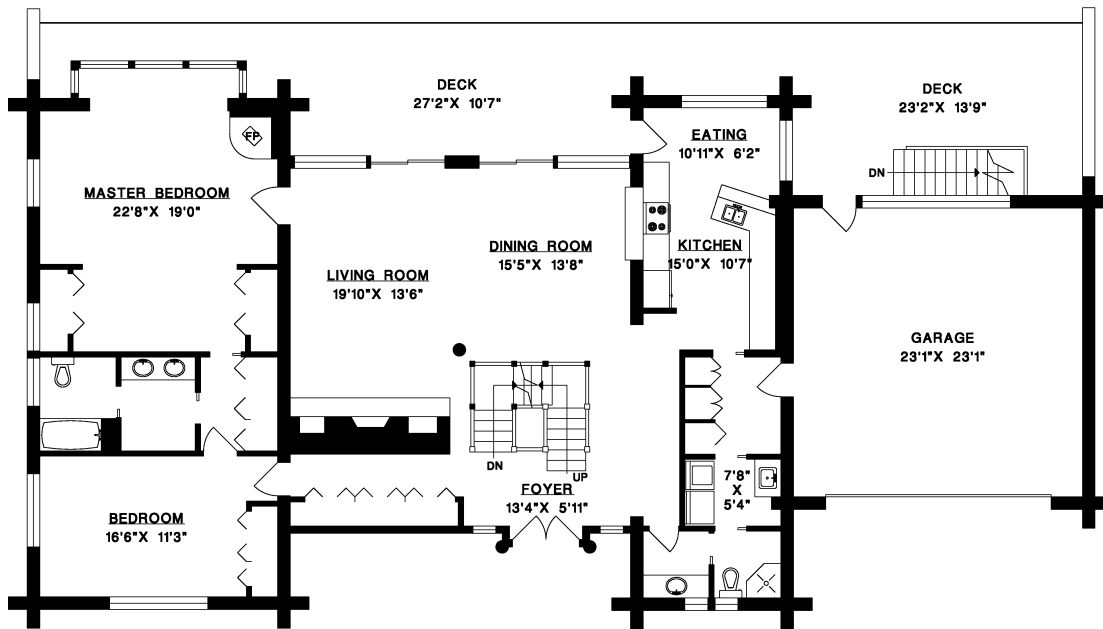
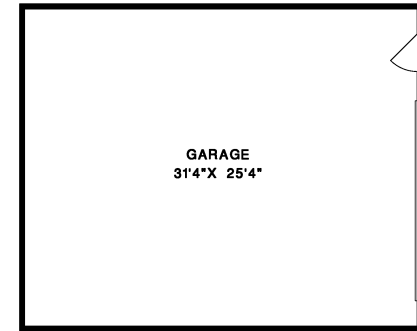
915 TRANT ROAD, GIBSONS BC

MAIN FLOOR 2,260 SQ.FT.
 UPPER FLOOR 929 SQ.FT.
 LOWER FLOOR 2,213 SQ.FT.

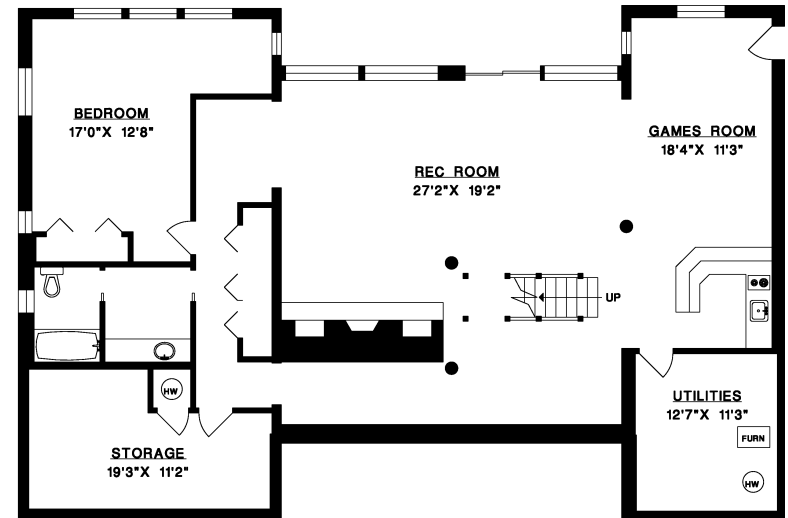
LIVABLE 5,402 SQ.FT.
 GARAGE 605 SQ.FT.
 DECK 786 SQ.FT.
 SECOND GARAGE 842 SQ.FT.



UPPER FLOOR



MAIN FLOOR



LOWER FLOOR

