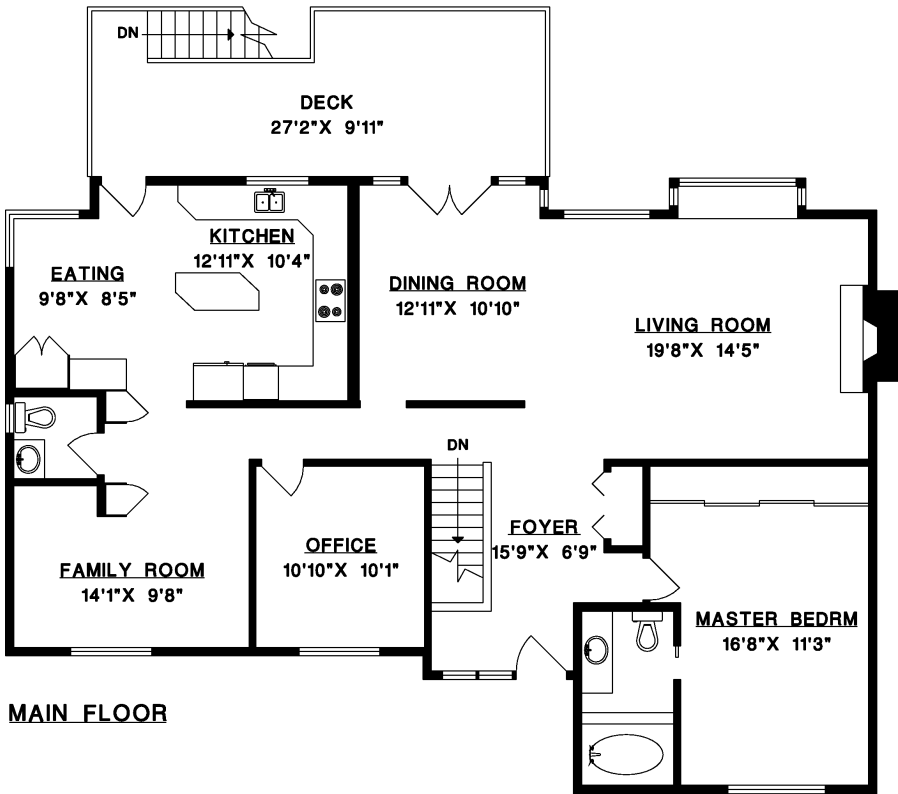


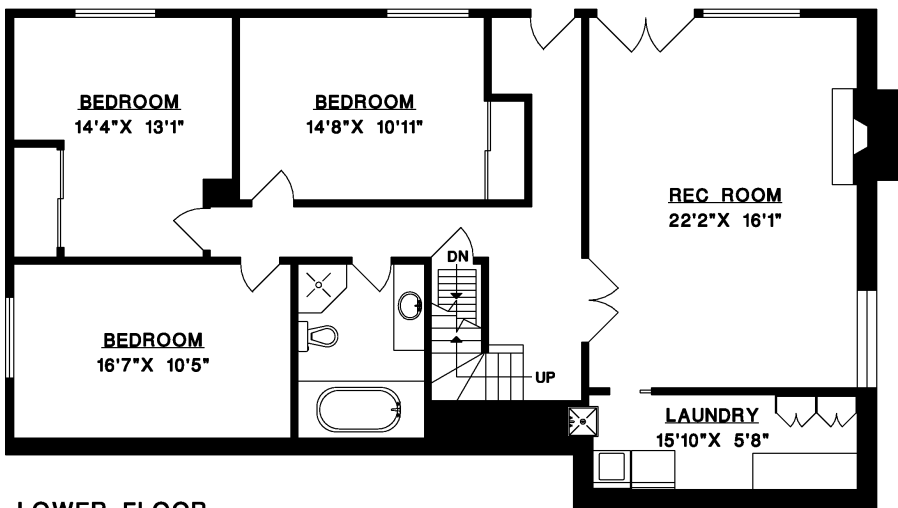
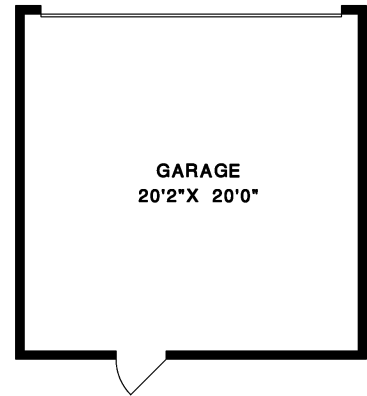


2110 ROSEBERRY AVENUE, WEST VANCOUVER

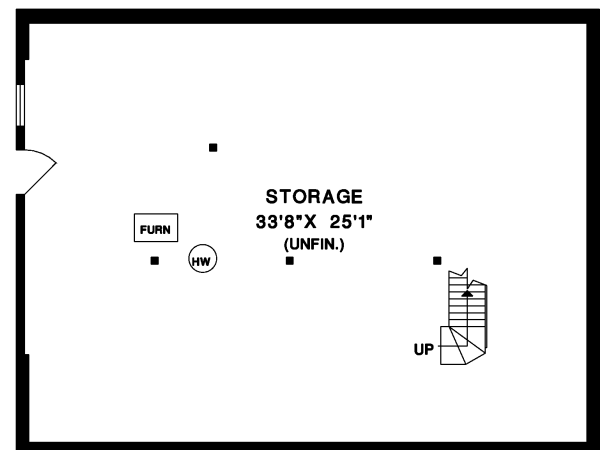
MAIN FLOOR	1,625 SQ.FT.
LOWER FLOOR	1,451 SQ.FT.
LIVABLE	3,076 SQ.FT.
BASEMENT	932 SQ.FT.
GARAGE	445 SQ.FT.
DECK	252 SQ.FT.



MAIN FLOOR



LOWER FLOOR



BASEMENT

