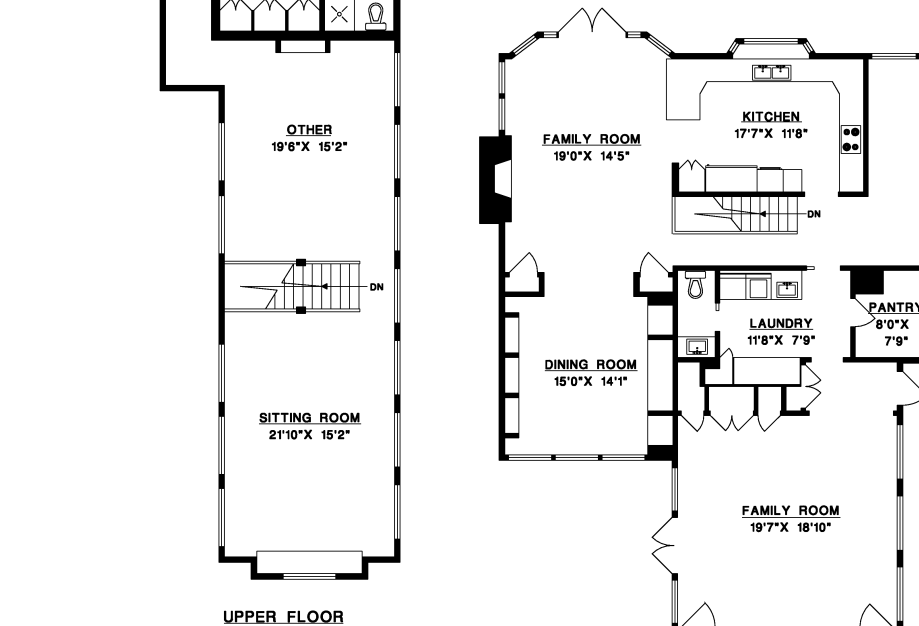
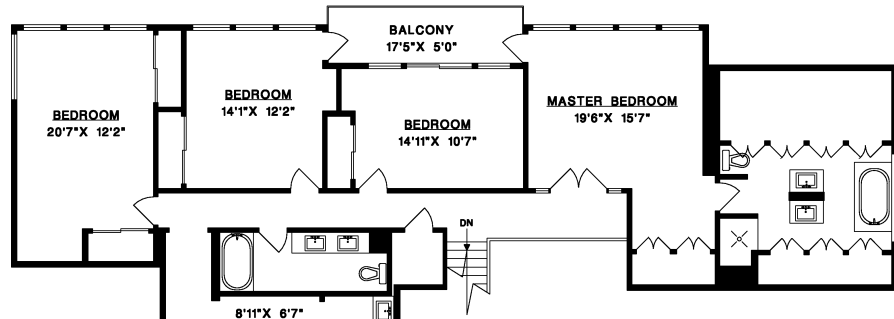




4344 ROCKRIDGE DRIVE, WEST VANCOUVER



MAIN FLOOR	2,970 SQ.FT.
UPPER FLOOR	2,626 SQ.FT.
LOWER FLOOR	1,803 SQ.FT.
LIVABLE	7,399 SQ.FT.
FOOD PREP AREA	414 SQ.FT.
BASEMENT STOR.	647 SQ.FT.
GARAGE	484 SQ.FT.
BALCONY	89 SQ.FT.

