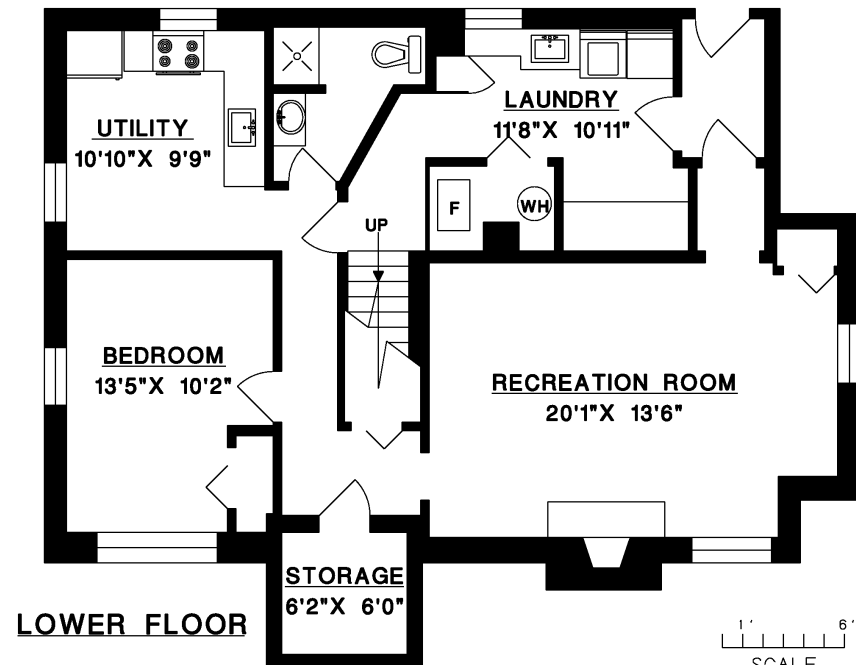
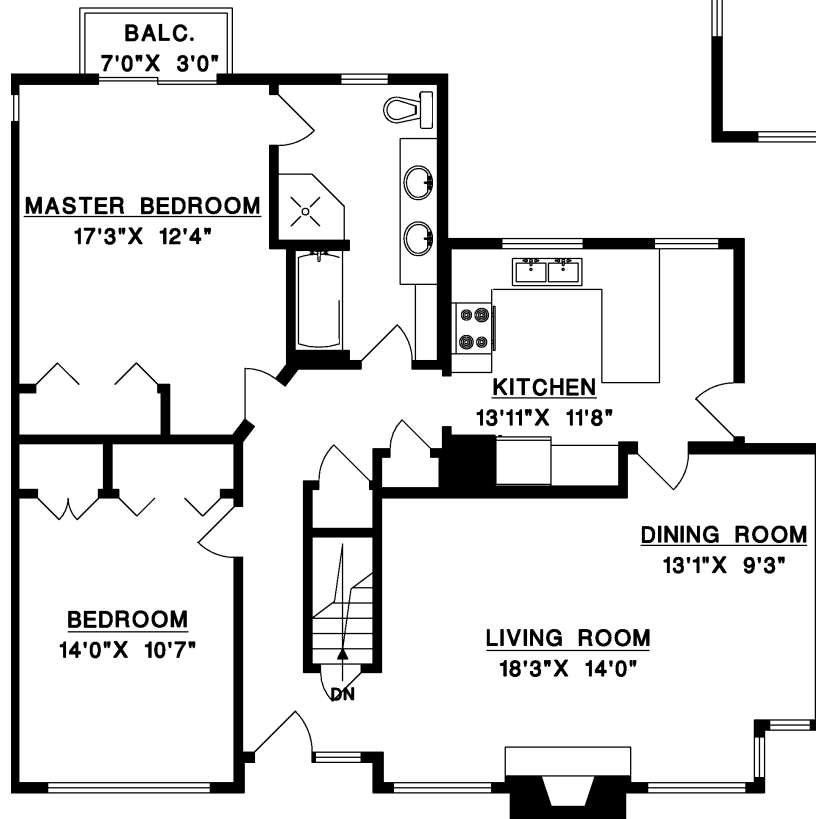
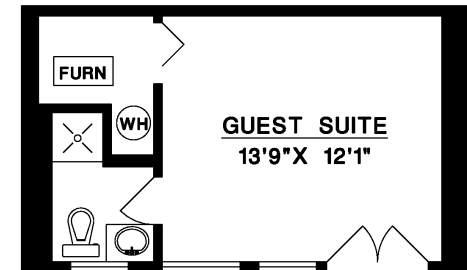
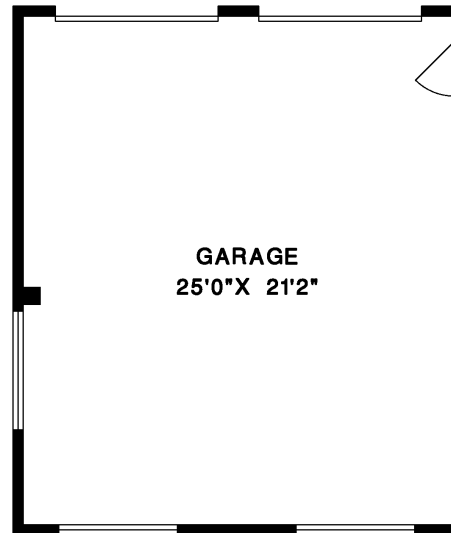




1118 ADDERLEY STREET, NORTH VANCOUVER

MAIN FLOOR	1,210 SQ.FT.
LOWER FLOOR	1,085 SQ.FT.
LIVABLE	2,295 SQ.FT.
GARAGE	577 SQ.FT.
GUEST SUITE	290 SQ.FT.



MAIN FLOOR

LOWER FLOOR

